

DUMETA[®]

High quality positioning equipment

Dreh- und Spannfutter

**D-K11 / D-K12 /
D-K72**



D-K12



D-K72



D-K11

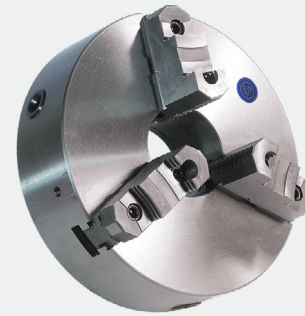
DUMETA®

High quality positioning equipment

Dreh- und Spannfutter

Zentrisch spannende 3-Backenfutter ISO 3442

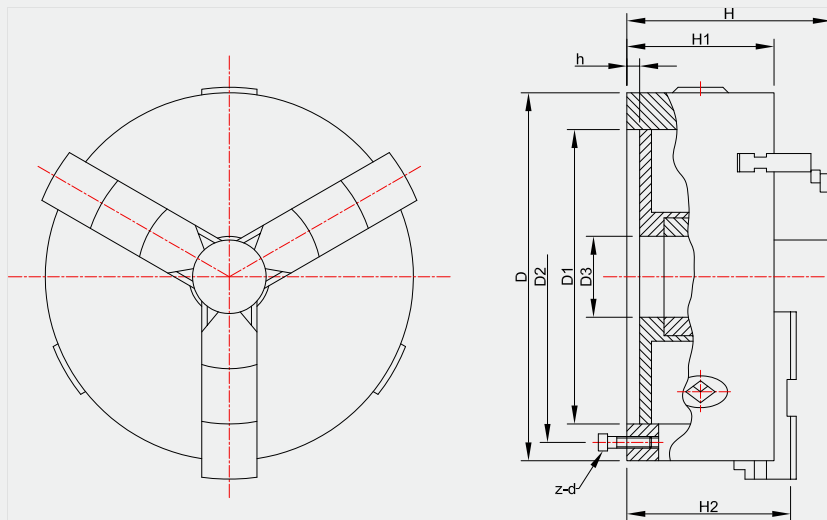
D-K11



D - K11A



D - K11



D - K11

Technische Daten

| Modell | D1 | D2 | D3 | H | H1 | H2 | h | z-d |
|-------------|-----|-----|-----|-------|-----|-------|-----|-------|
| D-K11-80 | 55 | 66 | 16 | 66 | 50 | - | 3.5 | 3-M6 |
| D-K11-100 | 72 | 84 | 22 | 74.5 | 55 | - | 3.5 | 3-M8 |
| D-K11-125 | 95 | 108 | 30 | 85 | 58 | - | 4 | 3-M8 |
| D-K11-130 | 100 | 115 | 30 | 85 | 58 | - | 4 | 3-M8 |
| D-K11-160 | 130 | 142 | 40 | 95 | 65 | - | 5 | 3-M8 |
| D-K11-160A | 130 | 142 | 40 | 109 | 65 | 71 | 5 | 3-M8 |
| D-K11-165 | 130 | 145 | 40 | 95 | 65 | - | 5 | 3-M8 |
| D-K11-190 | 155 | 172 | 55 | 109 | 75 | - | 5 | 3-M10 |
| D-K11-200 | 165 | 180 | 65 | 109 | 75 | - | 5 | 3-M10 |
| D-K11-200A | 165 | 180 | 65 | 122 | 75 | 80 | 5 | 3-M10 |
| D-K11-240 | 195 | 215 | 70 | 120 | 80 | - | 8 | 3-M12 |
| D-K11-250 | 206 | 226 | 80 | 120 | 80 | - | 5 | 3-M12 |
| D-K11-250A | 206 | 226 | 80 | 133 | 80 | 85 | 5 | 3-M12 |
| D-K11-315 | 260 | 285 | 100 | 142.5 | 90 | - | 6 | 3-M16 |
| D-K11-315A | 260 | 285 | 100 | 155.5 | 90 | 96.5 | 6 | 3-M16 |
| D-K11-325 | 272 | 296 | 100 | 142.5 | 90 | - | 6 | 3-M16 |
| D-K11-400 | 340 | 368 | 130 | 155.5 | 100 | - | 6 | 3-M16 |
| D-K11-400A | 340 | 368 | 130 | 170.5 | 100 | 108.5 | 6 | 3-M16 |
| D-K11-500A | 440 | 465 | 200 | 203 | 115 | 123 | 6 | 6-M16 |
| D-K11-630A | 560 | 595 | 260 | 218 | 130 | 138 | 7 | 6-M16 |
| D-K11-800A | 710 | 760 | 385 | 249 | 148 | 158 | 8 | 6-M20 |
| D-K11-1000A | 910 | 950 | 460 | 266 | 165 | - | 8 | 6-M24 |

Änderungen und Irrtümer in den technischen Daten und Angaben vorbehalten.

DUMETA®

High quality positioning equipment

Dreh- und Spannfutter

Zentrisch spannende 3-Backenfutter ISO 3442

D-K11

Das Modell D-K11 ist jetzt auch verfügbar mit einem Spannbereich bis zu $\varnothing 1500$ mm.
Fragen Sie nach dem Artikel-Nr. D-K11-1500A.

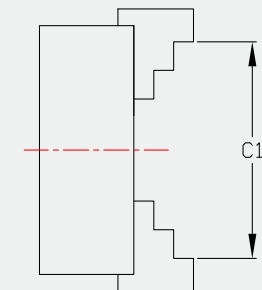
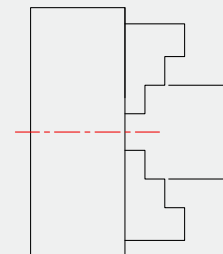
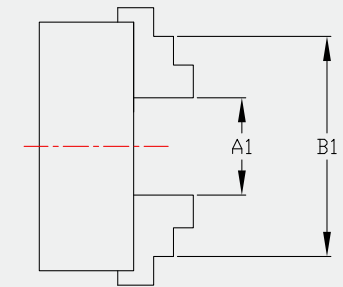
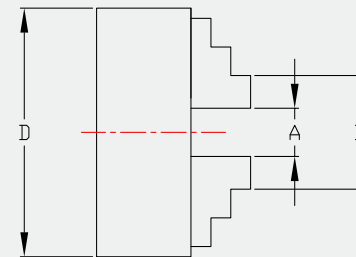


D - K11-1500A

Technische Daten

| Modell | Innenbacken Spannbereich | Außenbacken Spannbereich | Innenbacken Spannbereich |
|--------------|-----------------------------|-----------------------------|-----------------------------|
| D-K11 | A-A1 | B-B1 | C-C1 |
| 80 | 2-22 | 25-70 | 22-63 |
| 100 | 2-30 | 30-90 | 30-80 |
| 125 | 2,5-40 | 38-125 | 38-110 |
| 130 | 3-40 | 40-130 | 40-120 |
| 160 | 3-55 | 50-160 | 55-145 |
| 165 | 4-60 | 52-165 | 55-150 |
| 190 | 4-70 | 65-190 | 65-190 |
| 200 | 4-85 | 65-200 | 65-200 |
| 240 | 6-100 | 80-240 | 90-240 |
| 250 | 6-110 | 80-250 | 90-250 |
| 315 | 10-140 | 95-315 | 100-315 |
| 325 | 10-140 | 95-325 | 100-325 |
| 400 | 15-210 | 120-400 | 120-400 |
| 500 | 25-280 | 150-500 | 150-500 |
| 630 | 50-350 | 170-630 | 170-630 |
| 800 | 150-450 | 300-800 | 300-800 |
| 1000 | 290-600 | 430-1000 | 430-1000 |

Änderungen und Irrtümer in den technischen Daten und Angaben vorbehalten.



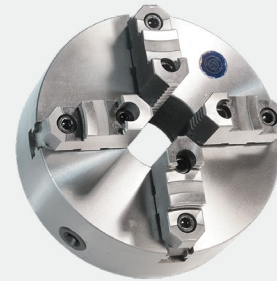
DUMETA®

High quality positioning equipment

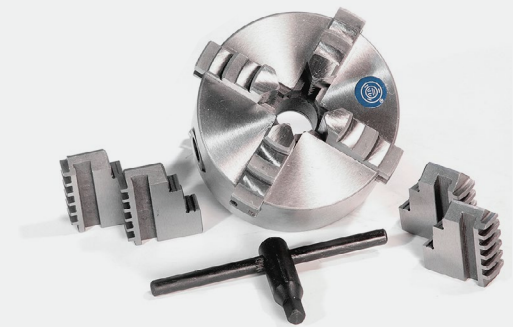
Dreh- und Spannfutter

Zentrisch spannende 4-Backenfutter

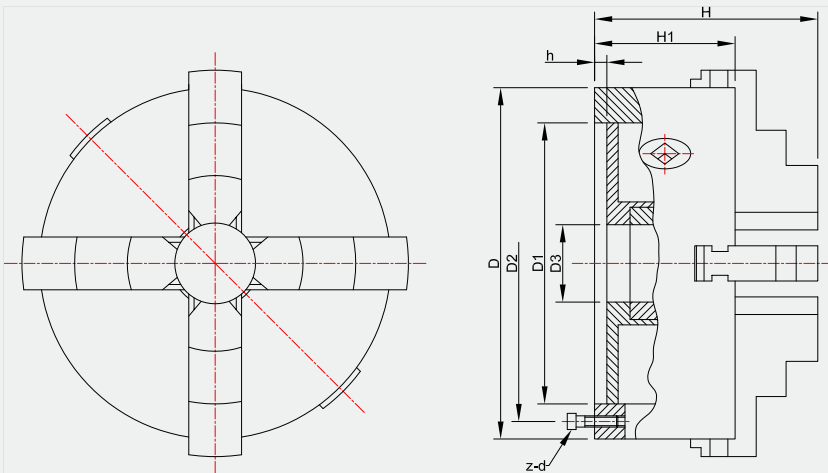
D-K12



D - K12A



D - K12



D - K12

Technische Daten

| Modell | D1 | D2 | D3 | H | H1 | h | z-d |
|-------------|-----|-----|-----|-------|-----|-----|-------|
| D-K12-80 | 55 | 66 | 16 | 66 | 50 | 3,5 | 3-M6 |
| D-K12-100 | 72 | 84 | 22 | 74,5 | 55 | 3,5 | 3-M8 |
| D-K12-125 | 95 | 108 | 30 | 84 | 58 | 4 | 3-M8 |
| D-K12-130 | 100 | 115 | 30 | 86 | 60 | 3,5 | 3-M8 |
| D-K12-160 | 130 | 142 | 40 | 95 | 65 | 5 | 3-M8 |
| D-K12-160A | 130 | 142 | 40 | 109 | 65 | 5 | 3-M8 |
| D-K12-200 | 165 | 180 | 65 | 109 | 75 | 5 | 3-M10 |
| D-K12-200A | 165 | 180 | 65 | 122 | 75 | 5 | 3-M10 |
| D-K12-250 | 206 | 226 | 80 | 120 | 80 | 5 | 3-M12 |
| D-K12-250A | 206 | 226 | 80 | 136 | 80 | 5 | 3-M12 |
| D-K12-315 | 260 | 285 | 100 | 142,5 | 90 | 6 | 3-M16 |
| D-K12-315A | 260 | 285 | 100 | 155,5 | 90 | 6 | 3-M16 |
| D-K12-400A | 340 | 368 | 130 | 171,5 | 100 | 6 | 3-M16 |
| D-K12-500A | 440 | 465 | 200 | 203 | 115 | 6 | 6-M16 |
| D-K12-630A | 560 | 595 | 260 | 218 | 130 | 7 | 6-M16 |
| D-K12-800A | 710 | 760 | 385 | 249 | 148 | 8 | 6-M20 |
| D-K12-1000A | 910 | 950 | 460 | 266 | 165 | 8 | 6-M24 |

Änderungen und Irrtümer in den technischen Daten und Angaben vorbehalten.

DUMETA®

High quality positioning equipment

Dreh- und Spannfutter

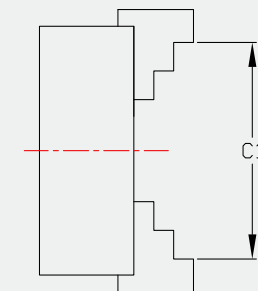
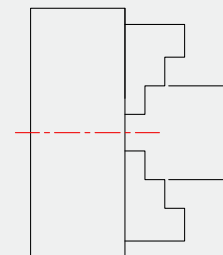
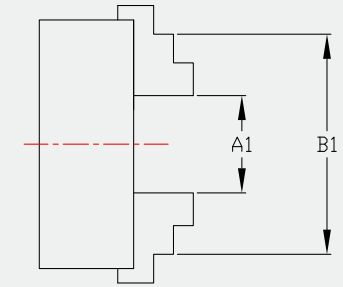
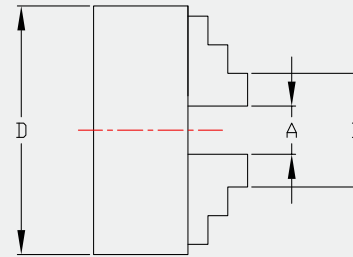
Zentrisch spannende 4-Backenfutter

D-K12

Technische Daten

| Modell | Innenbacken Spannbereich | Außenbacken Spannbereich | Innenbacken Spannbereich |
|--------|-----------------------------|-----------------------------|-----------------------------|
| D-K12 | A-A1 | B-B1 | C-C1 |
| 80 | 2-22 | 25-70 | 22-63 |
| 100 | 2-30 | 30-90 | 30-80 |
| 125 | 2,5-40 | 38-125 | 38-110 |
| 130 | 3-40 | 40-130 | 40-120 |
| 160 | 3-55 | 50-160 | 55-145 |
| 200 | 4-85 | 65-200 | 65-200 |
| 250 | 6-110 | 80-250 | 90-250 |
| 315 | 10-140 | 95-315 | 100-315 |
| 400 | 15-210 | 120-400 | 120-400 |
| 500 | 25-280 | 150-500 | 150-500 |
| 630 | 50-350 | 170-630 | 170-630 |
| 800 | 150-450 | 300-800 | 300-800 |
| 1000 | 290-600 | 430-1000 | 430-1000 |

Änderungen und Irrtümer in den technischen Daten und Angaben vorbehalten.

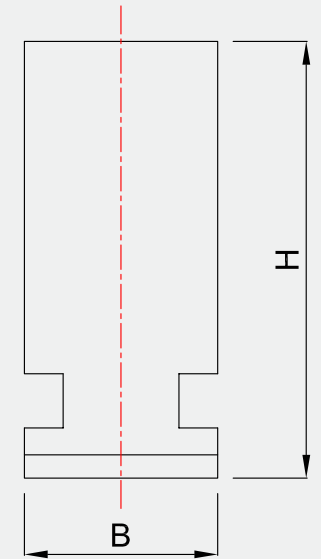
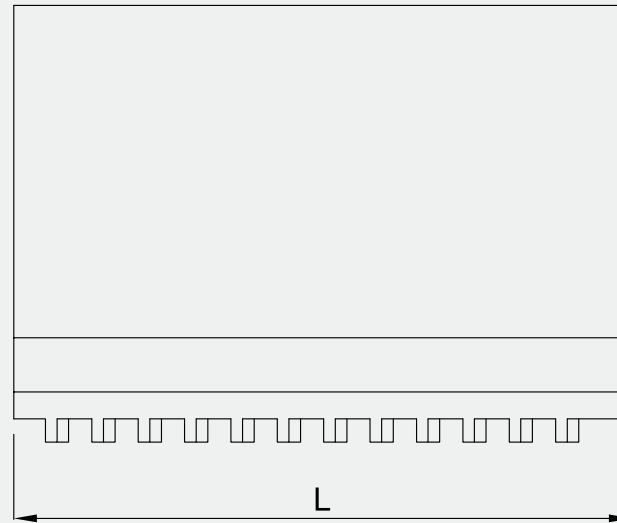
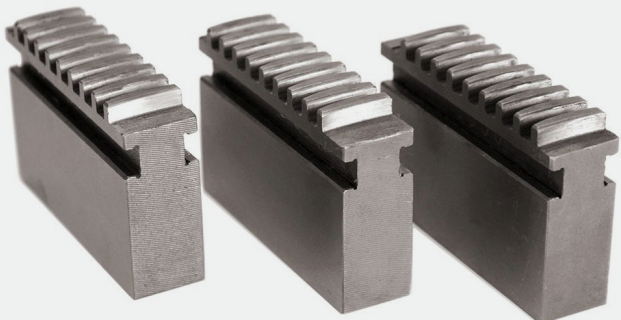
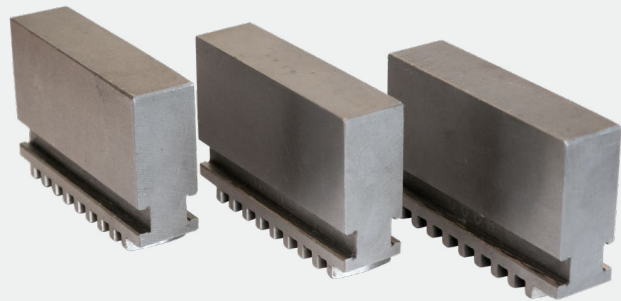


DUMETA®

High quality positioning equipment

Dreh- und Spannfutter
Backen

WEICHE BACKEN



Technische Daten

| Modell | K11/K12 | K11/K12 | K11/K12 | K11/K12 | K11/K12 | K11/K12 | K11/K12 | K11/K12 |
|--------|---------|---------|---------|---------|---------|---------|---------|---------|
| L | 80 | 100 | 125 | 160 | 200 | 250 | 315 | 400 |
| B | 32 | 43 | 56 | 70 | 85 | 105 | 130 | 143 |
| H | 12 | 15 | 16 | 18,5 | 22 | 27 | 36 | 36 |
| | 33 | 38 | 45 | 54 | 61 | 69 | 91 | 95 |

Änderungen und Irrtümer in den technischen Daten und Angaben vorbehalten.

DUMETA®

High quality positioning equipment

Dreh- und Spannfutter
Backen

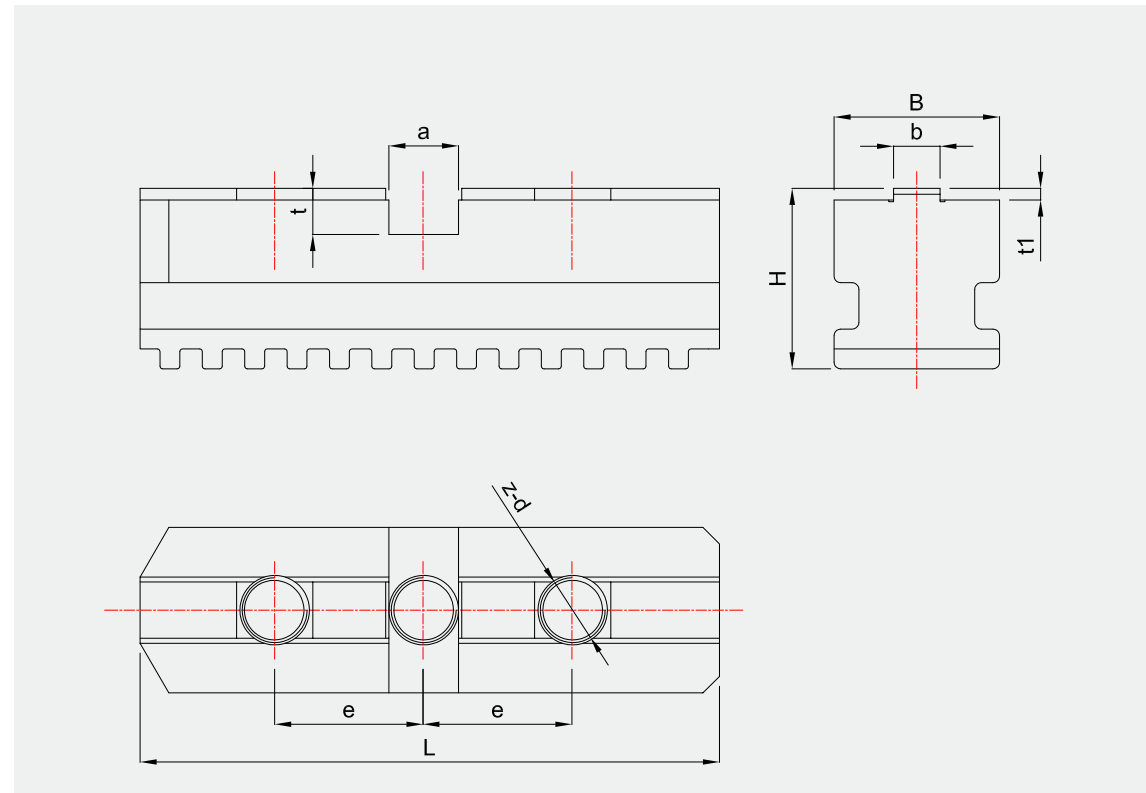
GRUNDBACKEN



Technische Daten

| Modell | K11/K12 160A | K11/K12 200A | K11/K12 250A | K11/K12 400A | K11/K12 500A | K11/K12 630A | K11/K12 800A |
|--------|-----------------|-----------------|-----------------|-----------------|-----------------|-----------------|-----------------|
| L | 64 | 80 | 95 | 127 | 165 | 195 | 286 |
| B | 20 | 22 | 27 | 36 | 46 | 50 | 60 |
| H | 33 | 35 | 37 | 46 | 55 | 57 | 65 |
| a | 12,675 | 12,675 | 19,025 | 19,025 | 19,025 | 19,025 | 19,025 |
| b | 7,94 | 7,94 | 12,7 | 12,7 | 12,7 | 12,7 | 12,7 |
| e | 19 | 22,2 | 27 | 38,1 | 38,1 | 38,1 | 38,1 |
| t | 4 | 4 | 4 | 7 | 7 | 7 | 7 |
| t1 | 3 | 3 | 3 | 3 | 3 | 3 | 3 |
| z-d | 2-M10 | 2-M10 | 2-M12 | 2-M16 | 4-M20 | 5-M20 | 7-M20 |

Änderungen und Irrtümer in den technischen Daten und Angaben vorbehalten.

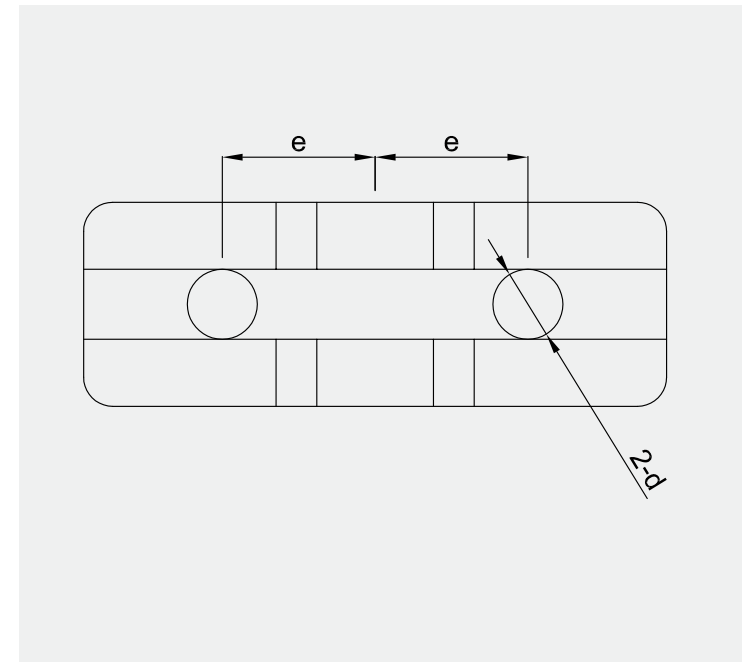
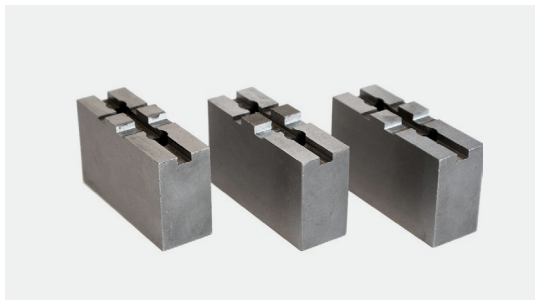


DUMETA®

High quality positioning equipment

Dreh- und Spannfutter
Backen

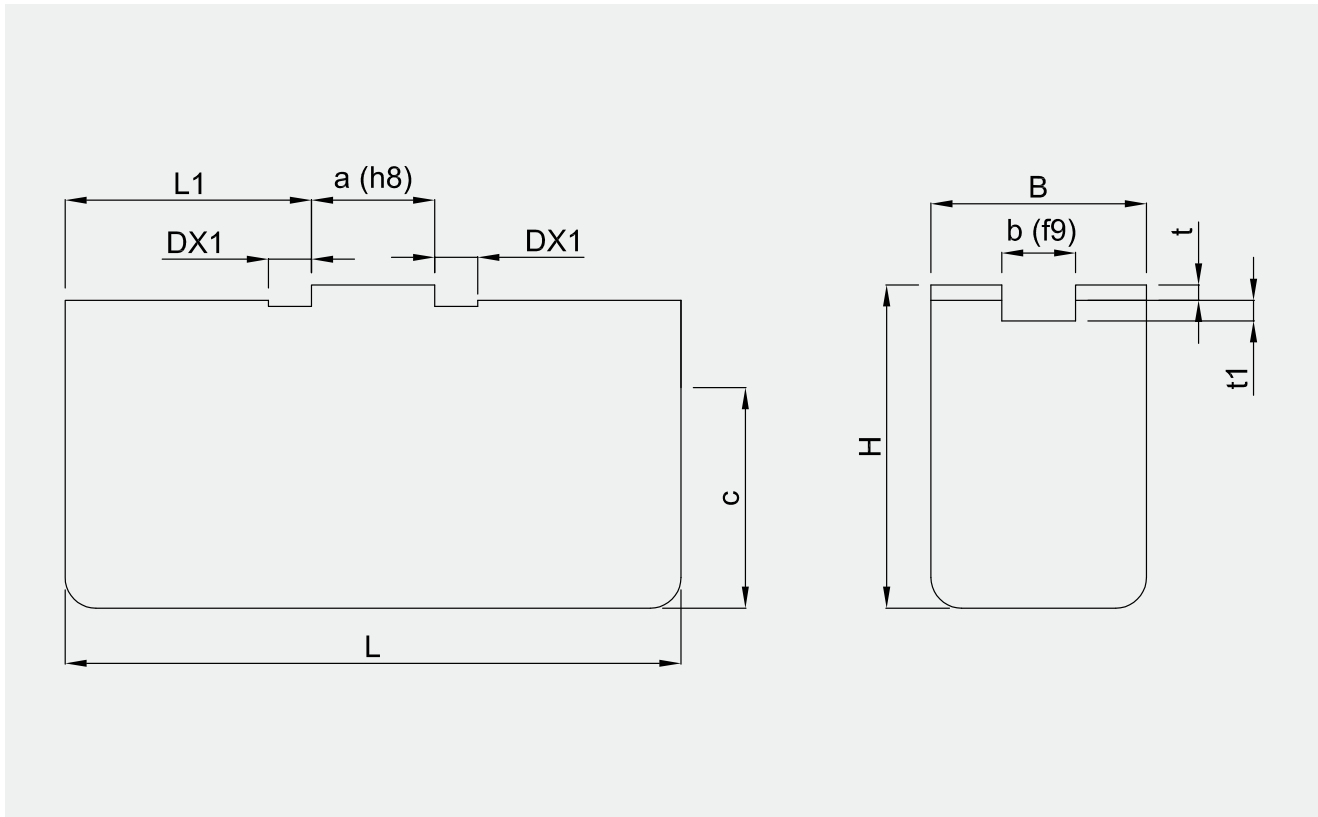
WEICHE AUF- SATZBACKEN



Technische Daten

| Modell | K11/K12 160A | K11/K12 200A | K11/K12 250A | K11/K12 400A | K11/K12 500A |
|--------|-----------------|-----------------|-----------------|-----------------|-----------------|
| L | 74 | 90 | 110 | 135 | 160 |
| H | 47 | 55 | 63 | 85 | 90 |
| b | 7,94 | 7,94 | 12,7 | 12,7 | 12,7 |
| D | 8 | 8 | 8 | 10 | 10 |
| B | 25 | 30 | 36 | 45 | 50 |
| L1 | 36 | 43 | 50 | 67 | 80 |
| a | 12,675 | 12,675 | 19,025 | 19,025 | 19,025 |
| e | 19 | 22,2 | 27 | 38,1 | 38,1 |
| d | ∅11 | ∅11 | ∅13 | ∅18 | ∅22 |
| d1 | ∅17 | ∅17 | ∅20 | ∅26 | ∅32 |
| t | 3 | 3 | 3 | 4 | 4 |
| t1 | 4 | 4 | 4 | 6 | 6 |
| c | 36 | 41 | 50 | 66 | 68 |

Änderungen und Irrtümer in den technischen Daten und Angaben vorbehalten.



DUMETA®

High quality positioning equipment

Dreh- und Spannfutter

Einzelspannende 4-Backenfutter

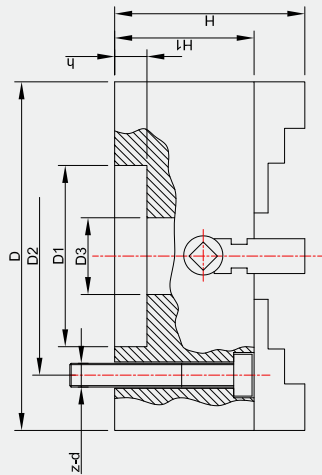
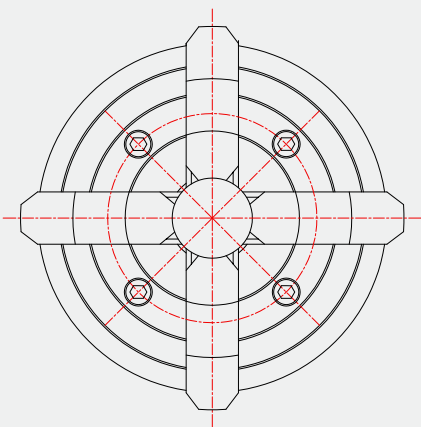
D-K72



D - K72



D - K72



D - K72

Technische Daten

| Modell | D1 | D2 | D3 | H | H1 | h | z-d |
|------------|---------|-----|-----|-----|-----|----|-------|
| D-K72-80 | 55 | 66 | 22 | 59 | 43 | 4 | 4-M6 |
| D-K72-100 | 72 | 84 | 25 | 77 | 54 | 4 | 4-M8 |
| D-K72-160 | 65 | 95 | 45 | 93 | 65 | 5 | 4-M10 |
| D-K72-200 | 75 | 95 | 56 | 107 | 75 | 6 | 4-M10 |
| D-K72-250 | 110 | 130 | 75 | 120 | 80 | 6 | 4-M12 |
| D-K72-315 | 140 | 165 | 95 | 138 | 90 | 6 | 4-M16 |
| D-K72-350 | 130/140 | 168 | 95 | 138 | 90 | 6 | 4-M16 |
| D-K72-400 | 160 | 185 | 125 | 143 | 95 | 8 | 4-M16 |
| D-K72-500 | 200 | 236 | 160 | 160 | 105 | 8 | 4-M20 |
| D-K72-630 | 220 | 258 | 180 | 180 | 118 | 10 | 4-M20 |
| D-K72-800 | 250 | 300 | 210 | 202 | 132 | 12 | 8-M20 |
| D-K72-1000 | 320 | 370 | 260 | 241 | 150 | 15 | 8-M20 |

Änderungen und Irrtümer in den technischen Daten und Angaben vorbehalten.

DUMETA®

High quality positioning equipment

Dreh- und Spannfutter

Einzelspannende 4-Backenfutter

D-K72

Technische Daten

| Modell | Innenbacken Spannbereich | Außenbacken Spannbereich |
|--------|-----------------------------|-----------------------------|
| D-K72 | A-A1 | B-B1 |
| 80 | 5-35 | 35-80 |
| 100 | 6-45 | 40-100 |
| 160 | 8-80 | 50-160 |
| 200 | 10-100 | 63-200 |
| 250 | 15-130 | 80-250 |
| 315 | 20-170 | 100-315 |
| 350 | 20-206 | 100-350 |
| 400 | 25-250 | 118-400 |
| 500 | 35-300 | 125-500 |
| 630 | 50-400 | 160-630 |
| 800 | 70-540 | 200-800 |
| 1000 | 100-680 | 250-1000 |

Änderungen und Irrtümer in den technischen Daten und Angaben vorbehalten.

